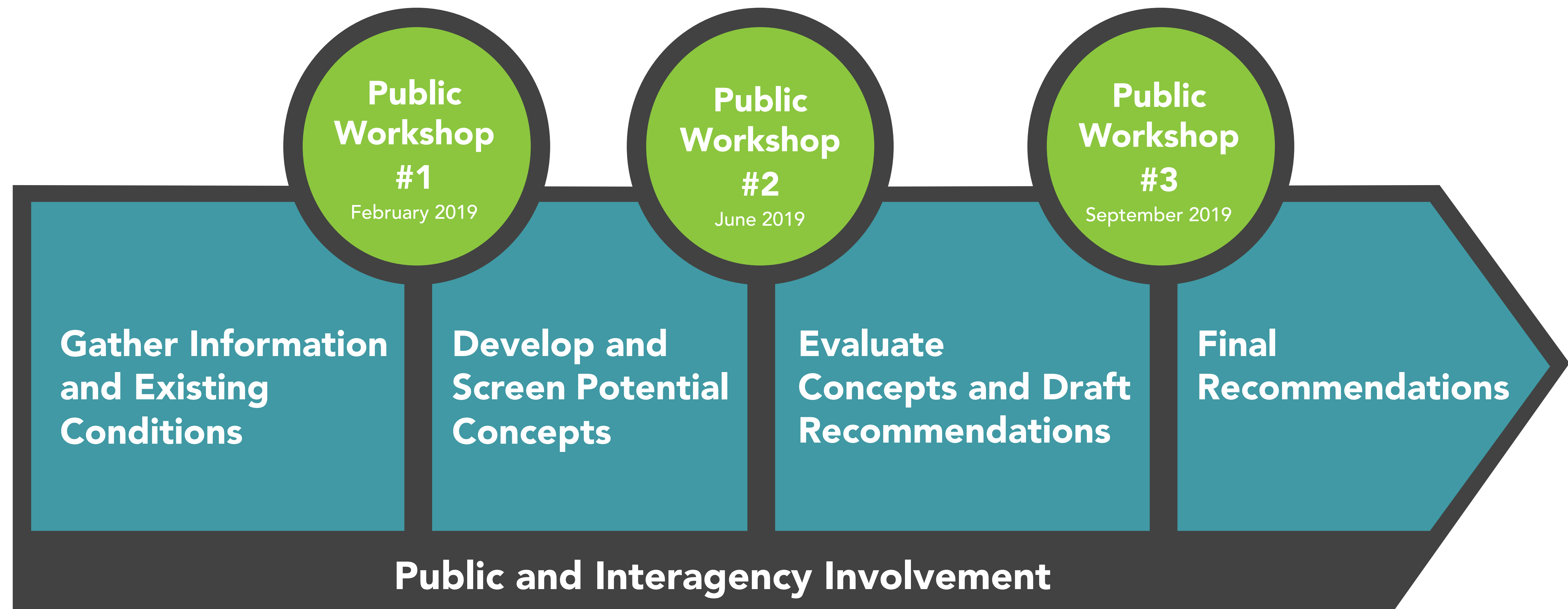


# STUDY PROCESS



The Rock Creek East I Livability Study will be a collaborative process with the communities, government agencies, and other neighborhood-level stakeholders. During the process DDOT will gather data, evaluate existing conditions, develop conceptual recommendations, and test those recommendations against screening criteria to develop final recommendations. All of these steps will be shaped by public feedback and supported by data and analysis to ensure the study recommendations are feasible and help to improve neighborhood safety and accessibility.